

# The Powerhouse Multi-Functional Diesel Fuel Improver

**POWER**  
Diesel Fuel  
Performance  
Improver **KLEEN**™



Improve Fuel Economy & Reduce Emissions

Give new life to your diesel fuel system with Power-Kleen™ high nitrogen NitroGenesis™ Additives.

Application	Directions and Treat Rate
<b>Clean Injectors</b>	Add five (5) ounces of Power-Kleen per 18 gallons of diesel fuel. Add Power-Kleen to tank first, then load fuel on top.
<b>Maintain Injectors</b>	Add one (1) ounce of Power-Kleen per 18 gallons of diesel fuel. Add Power-Kleen to tank first, then load fuel on top.
<b>Maintain Stored Diesel Fuel</b>	Add one (1) 12 ounce bottle of Power-Kleen per 200 gallons of stored diesel fuel. Add Power-Kleen to tank first, then load fuel on top.
<b>Reduce Carbon Footprint</b>	Add five (5) ounces of Power-Kleen per 18 gallons of diesel fuel. Add Power-Kleen to tank first, then load fuel on top.

## ➔ NitroGenesis Additives Simplify Treating All Diesel Fuels:

**High Sulfur Diesel Fuel (>500 ppm sulfur), Low Sulfur Diesel Fuel (<500 ppm sulfur)**

**Ultra Low Sulfur Diesel Fuel (<15 ppm sulfur), Biodiesel Blends B2 to B20**

The **NitroGenesis Additives** keep the entire fuel system clean. Powerful nitrogen cleaning molecules start immediately to dissolve existing deposits of carbon, gum and varnish in fuel injectors, lines and tanks and prevents their reformation.

### Power-Kleen is a Multifunctional Diesel Fuel Improver.

**Cleans fuel injectors | Improves fuel economy | Restores lost power | Provides added fuel lubricity | Prevents fuel system corrosion | Stabilizes fuel against oxidation aging | Disperses moisture that enters storage and vehicle tanks by condensation**

### Power-Kleen Provides the Following Economical and Environmental Benefits:

**HEUI Injector Clean-up:** Hydraulic / Electronic Unit Injectors (HEUI) require the Superior Performance Rating of Power-Kleen for injector cleanliness as measured in the Cummins L-10 Injector Test.

**Reduces the Carbon Footprint of Diesel Engines:** Improves combustion with up to a 4% improvement in fuel economy in scientifically measured field tests. Every gallon of improved fuel economy prevents the formation of approximately 23 pounds of carbon dioxide.

**Controls Moisture Without Using Methanol or Ethanol:** Prevents fuel system corrosion, filter icing and injector tip fouling.



# The Powerhouse Multi-Functional Diesel Fuel Improver for Winter Fuel



Cold Weather Diesel Fuel Improver

**Use of Power-Kleen and Power-Kleen Arctic Typically Results in Fuel Savings of 4 to 6 Percent**

Application	Directions and Treat Rate
<b>Improve Cold Weather Flow &amp; Maintain Fuel Systems</b>	Add one (1) ounce of Power-Kleen Arctic per 18 gallons of diesel. Add Power-Kleen Arctic to tank first, then load fuel on top.
<b>Maintain Stored Fuel in Cold Weather</b>	Add one (1) 12 ounce bottle of Power-Kleen Arctic per 200 gallons of stored diesel fuel. Add Power-Kleen Arctic to tank first, then load fuel on top.
<b>Maintain Stored Fuel Containing High Wax and/or Cloud Point 0° F</b>	Add twelve (12) ounces of Power-Kleen Arctic per 100 gallons of stored diesel fuel. Add Power-Kleen Arctic to tank first, then load fuel on top.
<b>Decrease High Wax and/or Cloud Point 0° F</b>	Add two (2) ounces of Power-Kleen Arctic per 18 gallons of diesel. Add Power-Kleen Arctic to tank first, then load fuel on top.
<b>Clean Dirty Fuel System &amp; Injectors</b>	Add two (2) ounces of Power-Kleen Arctic per 18 gallons of diesel. Add Power-Kleen Arctic to tank first, then load fuel on top.

## ➔ The Solution for Winter Ultra Low Sulfur Diesel

All diesel fuels contain wax and ULSD contains even more. This can cause problems when the temperatures drop. Power-Kleen™ Arctic alters the size and shape of the wax crystal structure, keeping the crystals small enough so they can pass through your fuel filter. Unfortunately, a common “solution” to the problem of wax crystals in diesel fuels is to blend the fuel with kerosene. Diesel kerosene blends decrease power and performance, increase fuel pump wear, lower BTU’s, and plug fuel filters. Kerosene blended diesel does not modify the size or shape of the wax crystals. Therefore, your fuel will not be winterized!

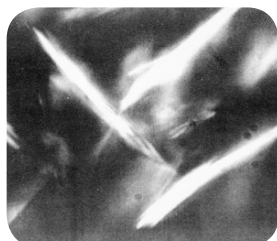


Winter Fuel without Power-Kleen Arctic

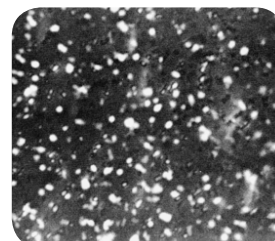
## ➔ Power-Kleen Benefits with Winter Fuel Protection

- Decreases the Size of the Wax Crystals | Increases Fuel Economy**
- Reduces Emissions and Smoke | Protects Against Rust and Corrosion**
- Eliminates Oxidation Deposits | Cleans Injectors**
- Provides Fuel Lubricity Needed for Ultra Low Sulfur Diesel | Eliminates Fuel System Deposits**

## ➔ Stop Winter Fuel Problems Before They Begin!



Large wax crystals in untreated diesel fuel caused by low temperatures can easily clog a standard 5 micron fuel filter.



After being treated with Power-Kleen Arctic these wax crystals are changed, and can easily fit through a standard fuel filter.